

Information pack for the Joint Health Overview & Scrutiny Committee



Proud To **Care**
Make It **Happen**
We Value **Respect**
Together We **Achieve**

Aims of this presentation

To provide:

- Overview of the services on each site
- Proposed UCC model as described in the OBC

Emergency Site

B PRH



C RSH



- Emergency Department
- Urgent Care Centre
- Critical Care Unit (ICA, HDU, ITU)
- Ambulatory Emergency Centre (AEC)
- Approximately 510 inpatient beds including:
 - Acute Stroke Unit
 - Coronary Care Unit
 - Women and Children's
 - Orthopaedic Trauma
 - Acute medicine
 - Complex planned surgery
- Outpatients
- Diagnostics
- Day Case Renal Unit
- Oncology/Haematology – chemotherapy

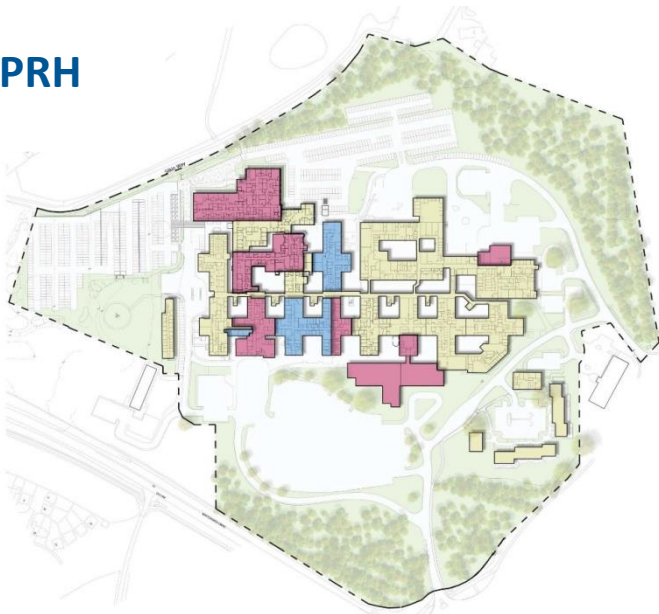
Planned Care Site

B RSH



- Diagnostic and Treatment Centre
- Urgent Care Centre
- Elective and Day Case Surgery
- Endoscopy
- Approximately 350 beds (240 inpatient beds and 110 day case beds) including:
 - Elective Orthopaedics
 - Breast Service
 - Frailty and Elderly Care
 - Rehabilitation

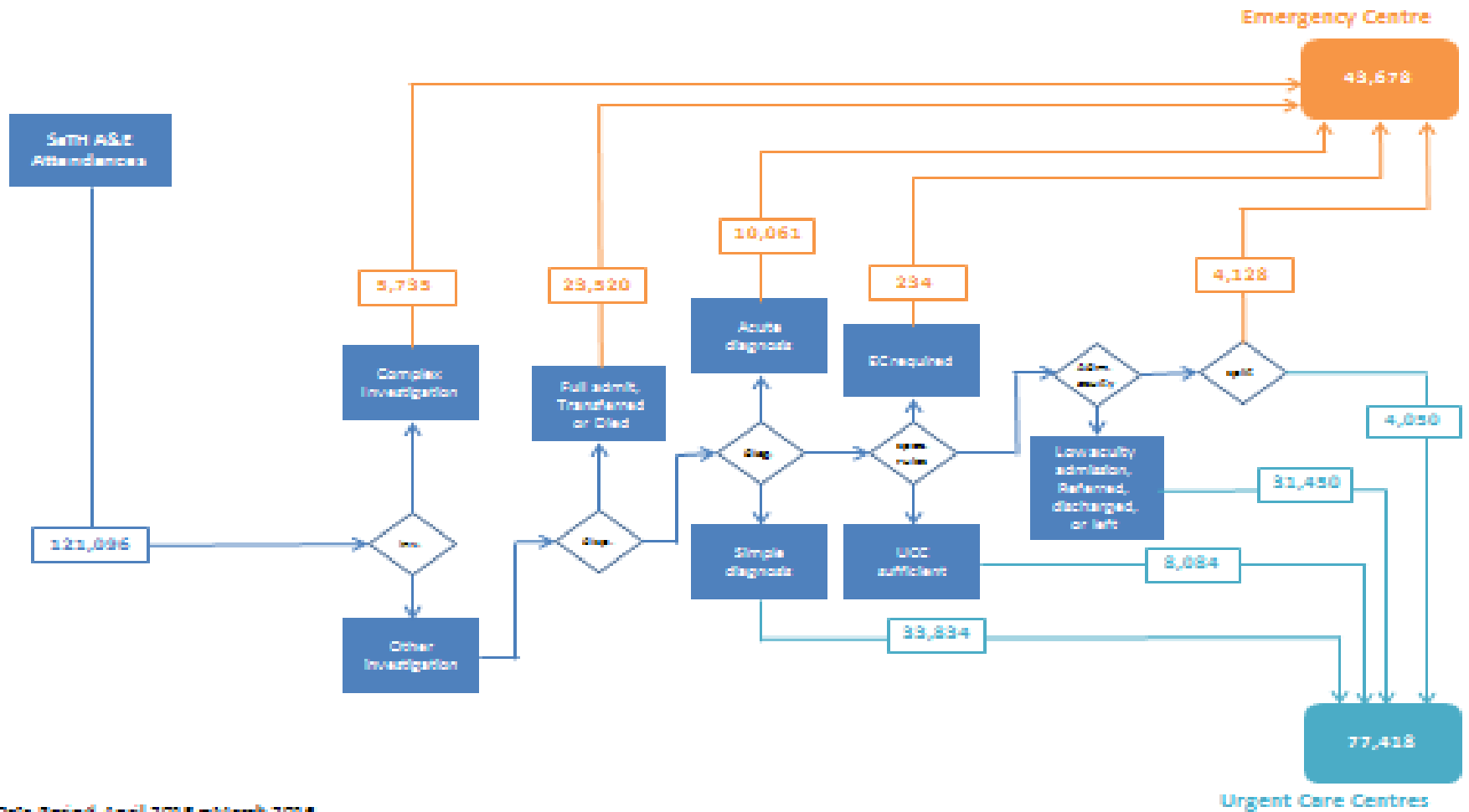
C PRH



- Outpatients
- Diagnostics
- Day Case Renal Unit
- Oncology/Haematology – chemotherapy

Future Fit algorithm applied to 2015/2016 SaTH activity

Allocation of 2015/16 A&E Attendances

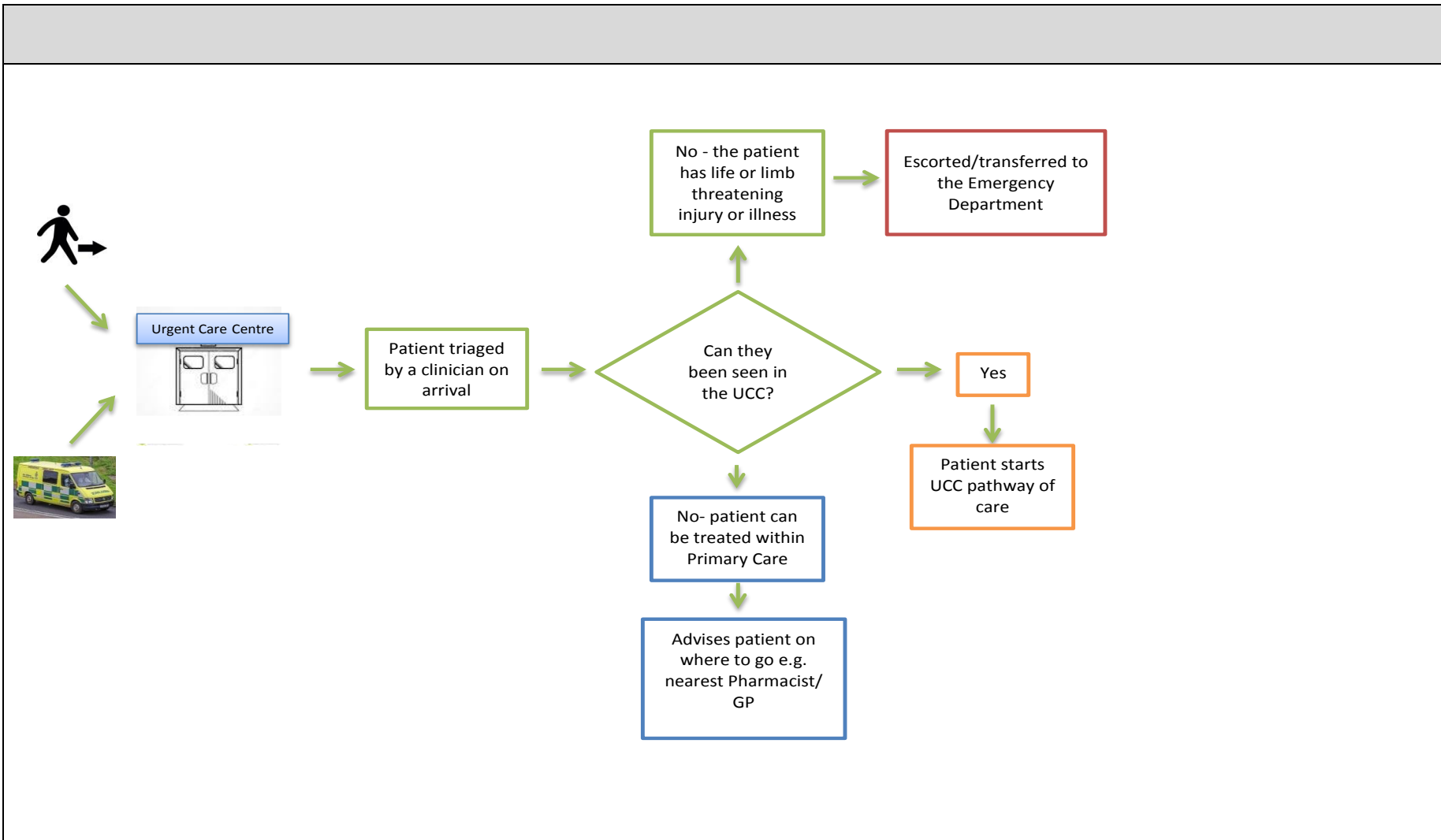


Data Period: April 2015 - March 2016

Urgent Care Centre

- The original Future Fit algorithm has been applied to the Trust's activity data for 2015/16 to determine whether patients need emergency or urgent care services
- Complaints/conditions to be treated at the Emergency Department include:
 - anaphylaxis
 - stroke
 - severe chest pain
 - multiple trauma
 - compound fractures
 - moderate burns
 - poisoning
- Complaints/conditions to be treated within Urgent Care services are:
 - sprains and simple fractures
 - cuts and scrapes
 - asthma
 - ENT conditions
 - scalds
 - bites and stings

Urgent Care Centre Pathway



Facilities

	RSH	PRH	Total
UCC Adult cubicles	7	7	14
UCC Children's cubicles	4	4	8
UCC Adult waiting places	30	30	60
UCC Children's waiting places	15	15	30

- Dedicated quiet areas
- Facilities for vulnerable patients
- Separate pathways for children and adults